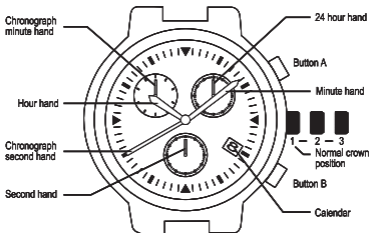


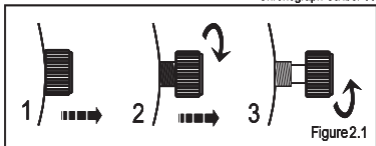
Chronograph Caliber 00



Operating Instructions

A. To set the time (See Figure 2 .1)

1. Pull crown gently out to position 3.
2. Turn crown clockwise to set the hands to desired time.
3. Push crown back in to position 1.



B. To set the date (See Figure 2.1)

1. Pull crown gently to position 2.
2. Turn crown counter clockwise until desired date appears in calendar window.
3. Push crown back to position 1.

Note:

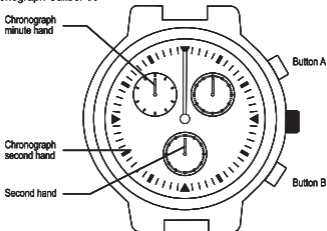
If the date is set between hours of around 9:00 PM and 1:00 AM, the date may not change on the following day.

If it is necessary to set the date during that time period, first change the time to any time outside it, set the date then reset the correct time.

C. Using the Chronograph

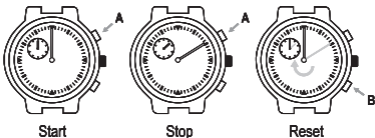
This Chronograph is able to measure and display time in 1/1 second united up to maximum of 1 hour.

Chronograph Caliber 00



D. Measuring time with the Chronograph

1. The Chronograph can be started and stopped each time button "A" is pressed.
2. To reset, press button "B" and the chronograph second and minute hands return to their 0 positions.



EXP
EXPEDITION

E. Accumulated elapsed time measurement



Start



Stop



Restart



Stop



Reset

F. Split time measurement



Start



Split



Split Release



Stop



Reset

Chronograph Caliber 00

G. Measurement of two competitors



Start



Finish time of the
first competitor



Finish time of the
second competitor



Time of the
second competitor



Reset

H. Chronograph Reset (Incl. After Replacing -Battery)

This procedure should be performed when the chronograph second hand does not return to the 0 second position after the chronograph has been reset. Including after the battery has been replaced.

EXP
EXPEDITION



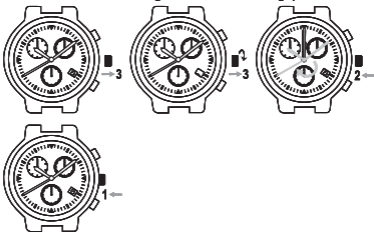
To reset the Chronograph

1. Pull crown gently to position 3.
2. Press button "A" to set the chronograph second hand to the 0 position.
3. The chronograph hands can be advanced rapidly by continuously pressing button "A".
4. Once the hands have been zeroed, reset the time and return the crown to its normal position.

Do not return crown to normal position while chronograph second hand return to 12:00 (Zero) position. Hand stops on the way when crown are returned to normal position and these positions are recognized as 12:00 (Zero) position.

I. Fitting Method of Hands

Place the module on case back shown in the figure and position the reference hand, then fit the hands according to the following procedure.



1. Pull crown gently to position 3.
2. Turn the crown to the left, and stop it just after the date changes. After the date starts changing, turn the crown slowly.
3. Push in the crown one step, taking care not to turn it.
4. Fit the reference hand, hour hand and minute hand to the 12-o'clock position.

When fitting the hands, remove the case back and place the movement on work stand.

This specifications might be changed without prior notice